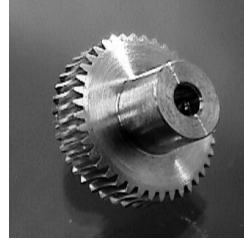
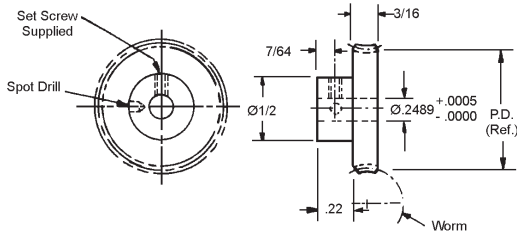


PRECISION WORM GEARS

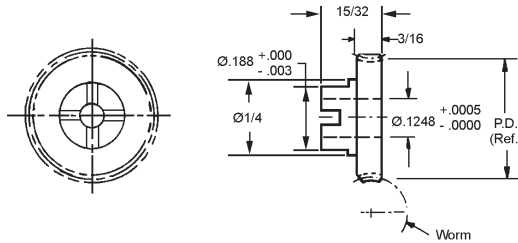
PITCH	STYLE	BORE	FACE	MATERIAL	AGMA QUALITY	TYPE
64	SINGLE, DOUBLE OR FOUR THREAD PIN HUB	1/4"	3/16"	BRONZE QQ-B-637 ALLOY 464	10	RIGHT HAND



SINGLE THREAD WORM	DOUBLE THREAD WORM	FOUR THREAD WORM	NO. OF TEETH	PITCH DIA.
CIRCULAR PITCH .04908 HELIX ANGLE 1° - 47' PRESSURE ANGLE 14-1/2°	CIRCULAR PITCH .09817 HELIX ANGLE 3° - 35' PRESSURE ANGLE 14-1/2°	CIRCULAR PITCH .19635 HELIX ANGLE 7°-8' PRESSURE ANGLE 14-1/2°		
STOCK NO.	STOCK NO.	STOCK NO.		
W64B29-S40	W64B29-D40	W64B29-F40	40	.625
W64B29-S50	W64B29-D50	W64B29-F50	50	.781
W64B29-S60	W64B29-D60	W64B29-F60	60	.937
W64B29-S70	W64B29-D70	W64B29-F70	70	1.093
W64B29-S80	W64B29-D80	W64B29-F80	80	1.250
W64B29-S90	W64B29-D90	W64B29-F90	90	1.406
W64B29-S100	W64B29-D100	W64B29-F100	100	1.562
W64B29-S110	W64B29-D110	W64B29-F110	110	1.719
W64B29-S120	W64B29-D120	W64B29-F120	120	1.875

$$\text{Ratio} = \frac{\# \text{ of Teeth}}{\text{Worm Threads}}$$

PITCH	STYLE	BORE	FACE	MATERIAL	AGMA QUALITY	TYPE
64	SINGLE, DOUBLE OR FOUR THREAD PIN HUB	1/8"	3/16"	BRONZE QQ-B-637 ALLOY 464	10	RIGHT HAND



SINGLE THREAD WORM	DOUBLE THREAD WORM	FOUR THREAD WORM	NO. OF TEETH	PITCH DIA.
CIRCULAR PITCH .04908 HELIX ANGLE 1° - 47' PRESSURE ANGLE 14-1/2°	CIRCULAR PITCH .09817 HELIX ANGLE 3° - 35' PRESSURE ANGLE 14-1/2°	CIRCULAR PITCH .19635 HELIX ANGLE 7°-8' PRESSURE ANGLE 14-1/2°		
STOCK NO.	STOCK NO.	STOCK NO.		
W64B13-S40-C	W64B13-D40-C	W64B13-F40-C	40	.625
W64B13-S50-C	W64B13-D50-C	W64B13-F50-C	50	.781
W64B13-S60-C	W64B13-D60-C	W64B13-F60-C	60	.937
W64B13-S70-C	W64B13-D70-C	W64B13-F70-C	70	1.093
W64B13-S80-C	W64B13-D80-C	W64B13-F80-C	80	1.250
W64B13-S90-C	W64B13-D90-C	W64B13-F90-C	90	1.406
W64B13-S100-C	W64B13-D100-C	W64B13-F100-C	100	1.562
W64B13-S110-C	W64B13-D110-C	W64B13-F110-C	110	1.719
W64B13-S120-C	W64B13-D120-C	W64B13-F120-C	120	1.875
W64B13-S180-C	W64B13-D180-C	W64B13-F180-C	180	2.813
W64B13-S360-C	W64B13-D360-C	W64B13-F360-C	360	5.625

$$\text{Ratio} = \frac{\# \text{ of Teeth}}{\text{Worm Threads}}$$

Other numbers of teeth and AGMA Quality 12 and 14 are available on request.